



Office of International Services

Incoming Student Information

**Presented by:
Office of International Services**





Topics Covered Today

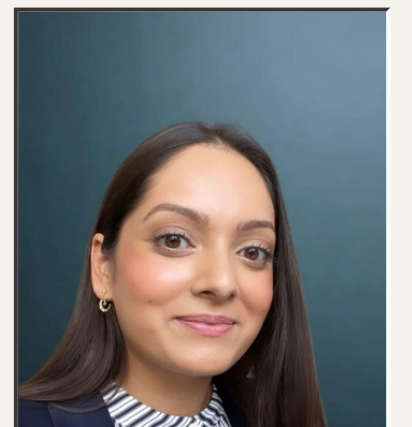
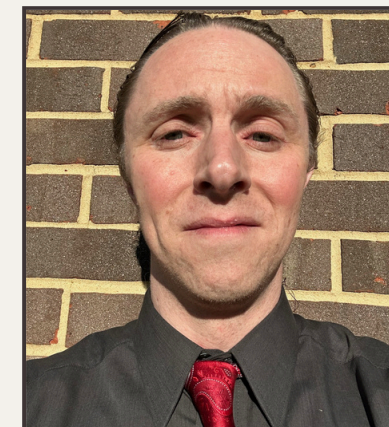
- Office of International Services
- Eligibility
- Pre-arrival
- Applying for the Student Visa
- Entering the U.S.
- Arrival & Check In
- Students currently in the US

About OIS

Student Advising Team

OIS advisors are highly trained professionals committed to supporting and welcoming the international student community by providing equitable access, and reliable and timely assistance.

We are your go-to resource for all F-1 or J-1 immigration inquiries and related requests. We provide resources to help you navigate and maintain your immigration status and act as liaisons between international students and the intricate regulatory landscape.



Obtaining the I-20 or DS-2019

Upon acceptance of admission offer and payment of any required JHU deposit, students will receive an email from OIS (ois.jhu.edu) on how to request an I-20 or DS-2019

You will be given instructions to log on to our portal:

ihopkins.jhu.edu

- unexpired passport
- financial documents (less than 3 months old)
- dependent information + funding

Plan to submit your request as early as possible: OIS processing time is 10 business days



Next Steps:

- Obtain I-20 or DS-2019 from OIS
 - Check for accuracy, print and sign!
- Pay SEVIS database fee at [FMJfee.com](https://fmjfee.com)
 - school code on document
- Find the U.S. Embassy or Consulate closest to your home*
 - www.usembassy.gov
 - travel.state.gov shows approximate wait times



Visa Appointment

When to go:

You should make your appointment as soon as you get your I-20 or DS-2019

Gather

documentation:

Passport, I-20 or DS-2019, fee payment receipt, photo, admission letter, financial documentation

Additional

documentation:

Any dependent documents, any other documents required by your local U.S. consulate, all applicable visa application forms and fees

Interview:

Consular officer will determine qualification for student visa, fingerprints, intent to return home

Points to remember during your visa interview:

- **Ties to Your Home Country and Residence Abroad**
 - You should be able to show that you have reasons for returning to your your home country and that you intend to depart the United States at the conclusion of your studies.
- **Know the Program and How It Fits Your Career Plans**
 - You should also be able to explain how studying in the US relates to your career goals and employment prospects when you return home.
- **Be Brief and Maintain a Positive Attitude**
 - Keep your answers to the officer's questions short and to the point, responding precisely to the consular officer's questions and statements.

Points to remember continued:

- **Different Requirements for Different Countries**
 - You should review your country's specific requirements on the U.S. consulate's website.
- **Dependents Remaining at Home**
 - If your spouse and children are remaining behind in your country, be prepared to explain how they will support themselves in your absence. If your family decides to join you at a later time, it may be helpful to have them apply at the same post where you applied for your visa
- **Other Special Considerations**
 - Tell the Truth, Social Media, Administrative Processing, Past Visits to the US, Arrests/Convictions, Third Country Nationals

Visa Issuance - don't be alarmed if:

- Your visa application requires further administrative processing
 - This commonly occurs if your name is similar to another individual and the consulate needs to check your status or background. It may also happen when your area of study is thought to be in a field of sensitive or critical technology
 - OIS cannot intervene in these cases
- Your visa is issued for less time than your program dates
 - visa renewal is possible if you have future travel plans
 - visa is allowed to expire inside the US

Entering the U.S.

Do not attempt to enter the US more than 30 days before your start date

Carry your immigration documents with you on the plane

CBP will inspect your documents upon your arrival and determine your admissibility

Once you are allowed to enter the US, CBP will provide a new electronic I-94 record

If you need to reach OIS in an emergency to address a US visa or border issue, you can call +1 667-208-7001 Monday through Friday 9 am-4pm EST) or +1-443-240-1938 at other times.



Students currently in the US:

Change of Immigration Status

Individuals inside the US on another visa status may have two options:

- Depart the US and apply for the student visa
- File for a Change of Status inside the US with the assistance of an immigration attorney

Transferring SEVIS Record

F1 or J1 students in the US may transfer their SEVIS record to JHU if:

- They are currently studying at another US school or
- They have just completed a degree at another US School or
- They are on OPT or within their OPT grace period



Validating your status in the U.S.

- You must complete the REQUIRED online Orientation and check-in eForm with OIS in iHopkins (ihopkins.jhu.edu) as soon as possible after arriving in the U.S.
 - OIS will review your:



- ***You must complete this online check-in within 15 days of your program start date.***

Maintaining Status

Check-In with OIS:

You should complete this as soon as you arrive!

Enroll full-time, In-person Courses:

Each term, with the exception of one online/hybrid course per term.

Limited Employment:

Limited opportunities for employment:
- On-campus
- Off-campus must be authorized in advance

Notify OIS:

Required to notify OIS of changes in:

-US address and contact info
-Program of Study / Student status

Regular Information Sessions provided by OIS including the OIS Online Orientation, Essentials Presentation, and Post-Arrival Session, help you understand how to maintain your status!

Tips from a fellow International Student:

Estelle Schurink

Transportation:

Transportation from the Airport

- Super Shuttle serving BWI, Reagan/National and Dulles
- The Airport Shuttle serving BWI, Reagan/National and Dulles
- MTA/Baltimore Light Rail serving BWI in a limited capacity
- Many downtown Baltimore hotels will offer free airport shuttle service for individuals staying with them. Check with the hotel to see if this is an option.



Neuroscience Major
Co-lead of ISAH for
undergraduate students

Class of 2025

Tips from a fellow International Student:

Connecting Now with other International Students/Campus Groups:

- ISAH
 - New Student Guide Book for all international students
- IGSA WhatsApp groups
- JHU student groups on social media
 - based on country of origin
 - some specific guides provided by international student groups



ISAH Instagram



ISAH LinkedIn

Visit the OIS Website!

JOHNS HOPKINS

Office of International Services



Contact OIS ▾

Students ▾

Scholars & Employees ▾

Travel Information ▾

University & Community Resources ▾

Department Administrators ▾

Students

New Students >

Transferring to JHU

Paying the SEVIS Fee

Applying for US Visa Stamp

Pre-Arrival Information

Check-in Process

Current F-1 Students

Current J-1 Students

Home / [Students](#) / [New Students](#)



New Students

Welcome to Hopkins! All international students admitted to eligible degree programs within the Johns Hopkins University schools will be issued an I-20 Certificate of Eligibility for F-1 student status. In some cases, students may be eligible for J-1 student status. To understand the difference between F-1 and J-1 visa types, click [here](#).

Contacting OIS

How can students reach OIS?



Email Inquiries
ois@jhu.edu



Phone Inquiries

667-208-7001

M,T,Th,F 1pm-4pm EST



iHopkins Assistance

OISTechSupport@jhu.edu



Regulation Updates/Trainings

Newsletters, Webinars, & More





Thank you!