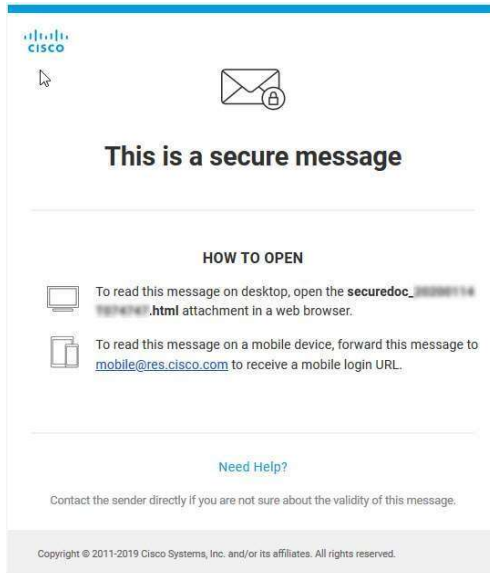


How To: Register with Cisco Registered Envelope Service (CRES) to Open Secure Email

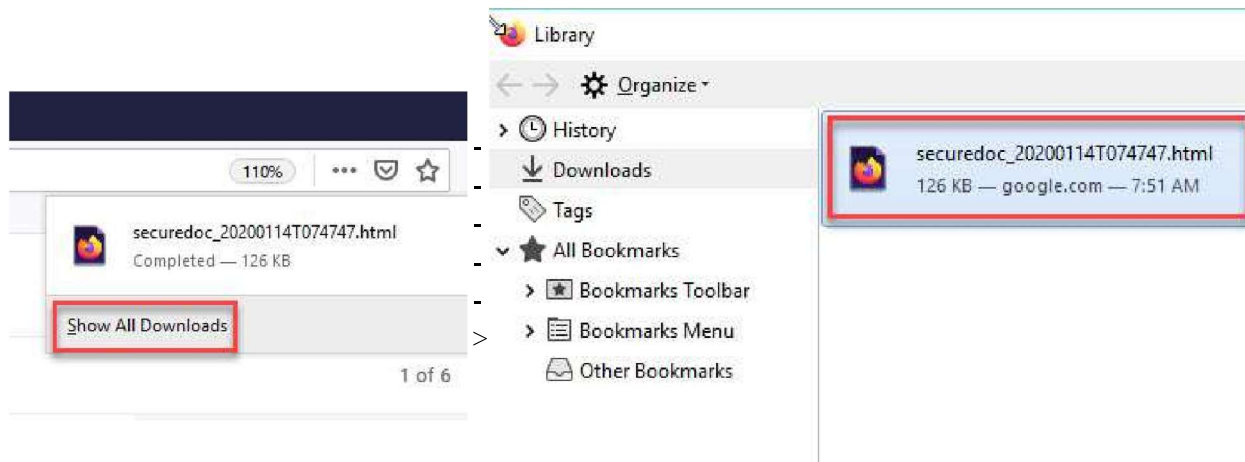
1. Upon opening a Secure Email you will see the following screen.



2. At the bottom of the message locate the securedoc_20... icon. Click the down arrow to begin downloading the attachment securedoc_20...



3. Double click the downloaded securedoc_20...



4. Click Register.



5. Complete the New User Registration and click Register.

NEW USER REGISTRATION * = required field

Enter Personal Information

Email Address: hopkinzjohnz@gmail.com

First Name*:

Last Name*:

Create a Password

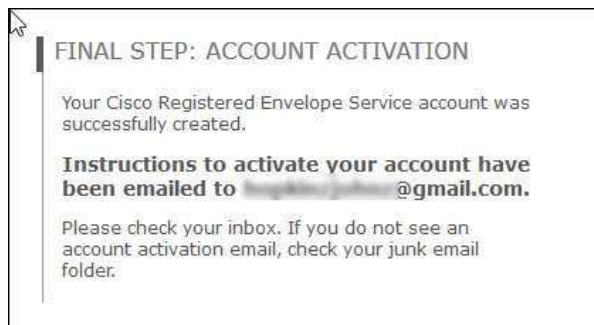
Password*:

Confirm Password*:

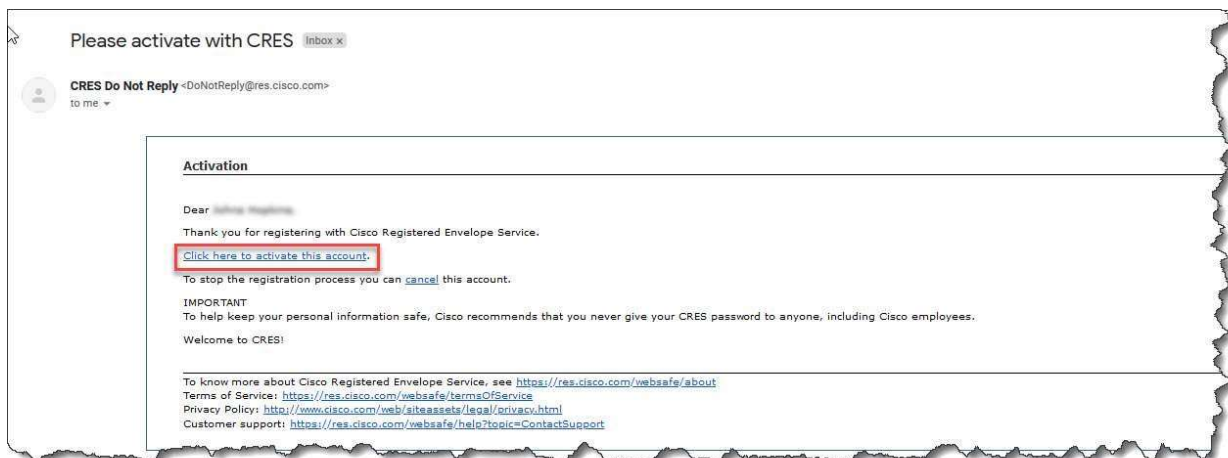
[I agree to CRES's Terms of Service](#)

Enter a minimum of 8 characters or numbers. Passwords are case-sensitive. Your password must contain both letters and numbers.

6. Check the Inbox of your email account to confirm activation.



8. Click Click here to activate this account.



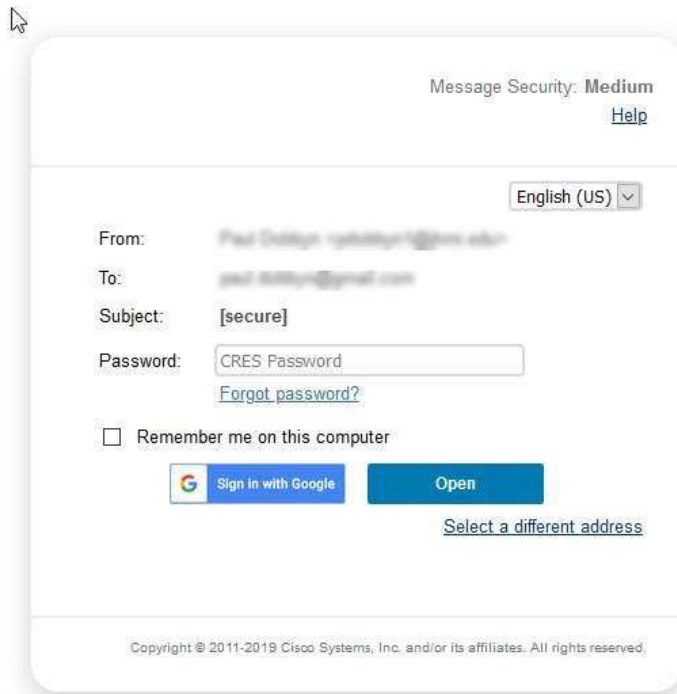
9. Return to your Registered Envelope and enter your password to open it.



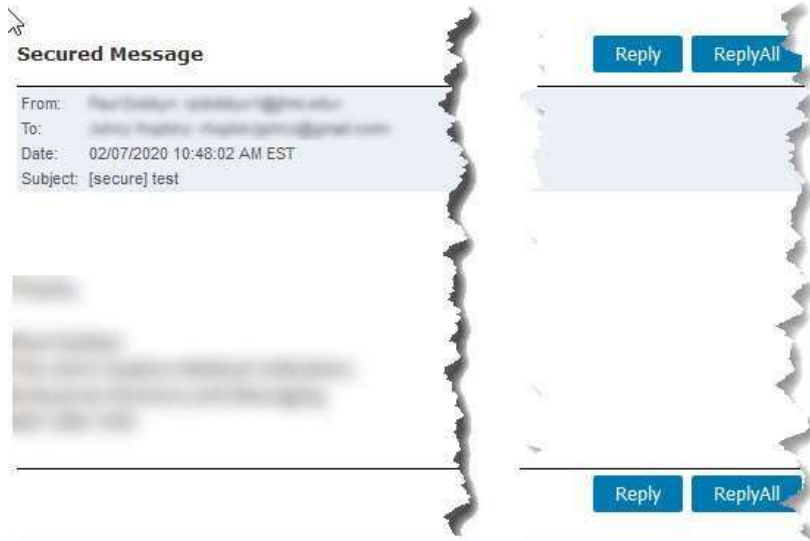
10. Double click the downloaded securedoc_20...



11. Enter your Password and click Open.



12. View the Secured Message content / attachment.



End of Document